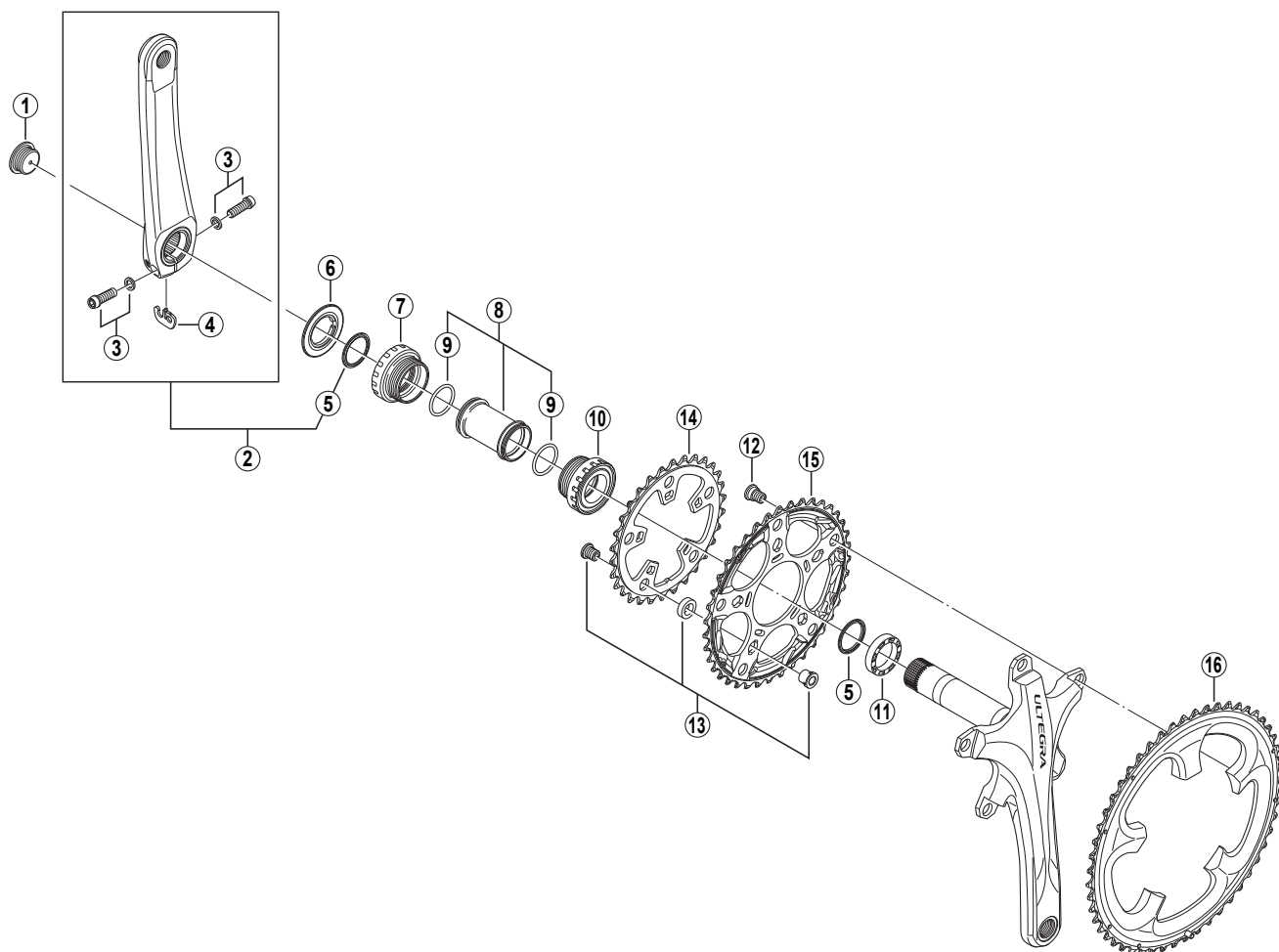


ULTEGRA Front Chainwheel FC-6703



• Bolt circle diameter: 130 mm...(For outer gear and middle gear), 92 mm...(For inner gear)

FC-7900
FC-6700
FC-5603

ITEM NO.	SHIMANO CODE NO.	DESCRIPTION	INTERCHANGEABILITY
1	Y-1KS 13000	Crank Arm Fixing Bolt	A
2	Y-1LJ 98010	Left Hand Crank Arm 165 mm	A
	Y-1LJ 98020	Left Hand Crank Arm 170 mm	A
	Y-1LJ 98030	Left Hand Crank Arm 172.5 mm	A
	Y-1LJ 98040	Left Hand Crank Arm 175 mm	A
3	Y-1G3 98010	Clamp Bolt (M6 x 19) & Washer	A A
4	Y-1GE98050	Plate	A A A
5	Y-1F3 16000	Ring	A A A
6	Y-1GF 11000	Spacer (3 mm)	A
7	Y-1LJ 98050	Left Hand Adapter (B.C.1.37" x 24T) English Thread	A
	Y-1LJ 98060	Left Hand Adapter (M36 x 24T) Italian Thread	A
8	Y-1G3 98150	Inner Cover & O-Ring	A A
9	Y-1TF 21000	O-Ring	A A A
10	Y-1LJ 98070	Right Hand Adapter (B.C.1.37" x 24T) English Thread	A
	Y-1LJ 98080	Right Hand Adapter (M36 x 24T) Italian Thread	A
11	Y-1F9 13000	Spacer (6.5 mm)	A
12	Y-1KY98160	Gear Fixing Bolt (5 pcs.)	A
13	Y-1LK 98010	Inner Gear Fixing Bolt Unit (M8 x 9.1/ 5 pcs.)	
14	Y-1LK 30000	Chainring 30T-D	
15	Y-1LK 98020	Chainring 39T-D	
16	Y-1LK 98030	Chainring 52T-D	

A: Same parts.

B: Parts are usable, but differ in materials, appearance, finish, size, etc.

Absence of mark indicates non-interchangeability.

Jun.-2009-2979

© Shimano Inc.

Specifications are subject to change without notice.

SHIMANO