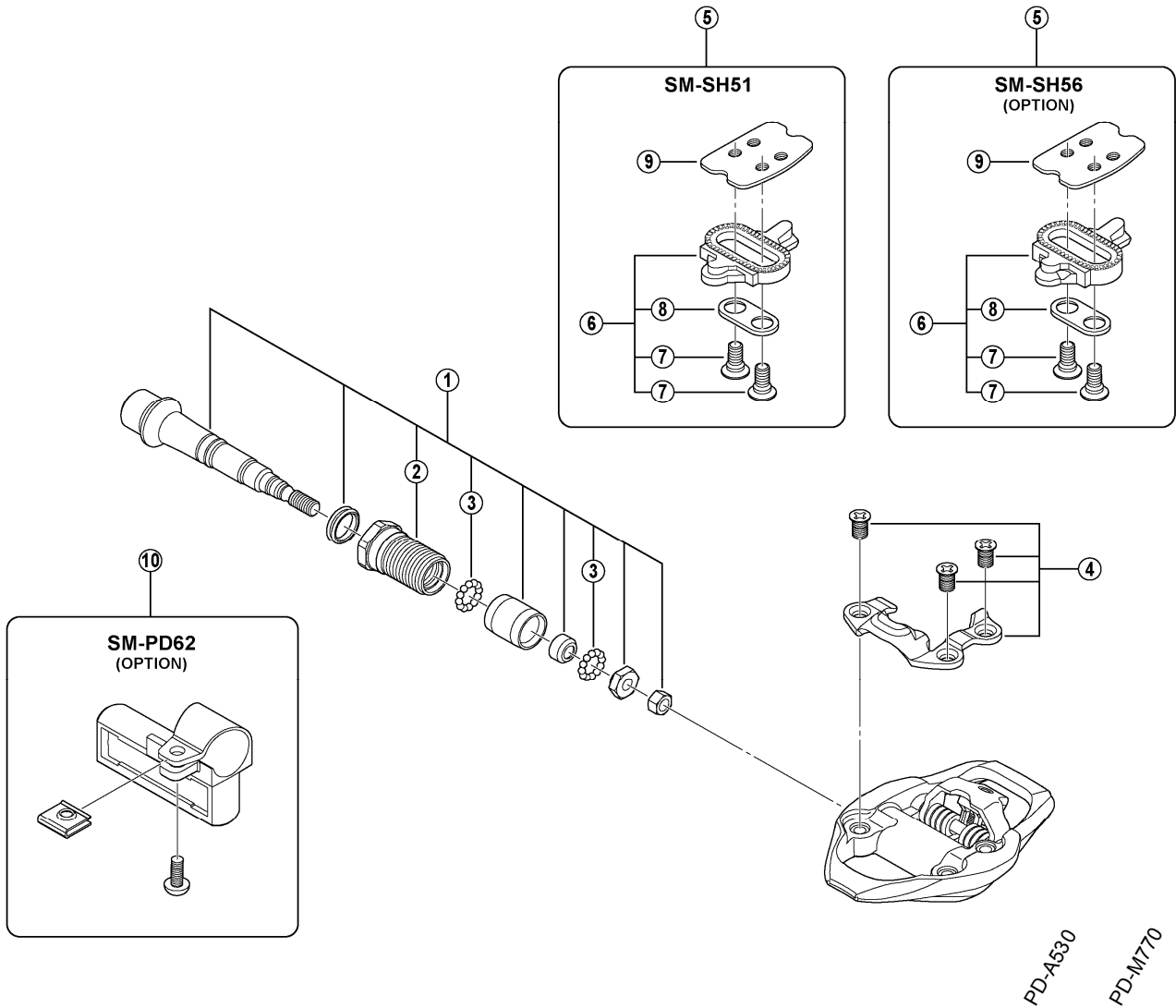


SPD Pedals

PD-A600



ITEM NO.	SHIMANO CODE NO.	DESCRIPTION	INTERCHANGEABILITY		
* 1	Y-45U98010	Pedal Axle Assembly (Right / B.C.9/16" x 20T.P.I.)		A	
* 1	Y-45U98020	Pedal Axle Assembly (Left / B.C.9/16" x 20T.P.I.)		A	
* 2	Y-45E98030	Lock Bolt (Right)		A	
* 2	Y-45E98040	Lock Bolt (Left)		A	
3	Y-41N98030	Steel Ball (3/32") 62 pcs.	A	A	
4	Y-46D98030	Body Cover (Right) & Fixing Bolts			
4	Y-46D98040	Body Cover (Left) & Fixing Bolts			
5	Y-42498200	SM-SH51 Cleat Set (Single Release Mode / Pair)	A	A	
5	Y-41S98090	SM-SH56 Cleat Set (Multiple Release Mode / Pair)	A		
6	Y-42498201	SM-SH51 Cleat Set w/o Cleat Nut (Single Release Mode / Pair)	A	A	
6	Y-41S98100	SM-SH56 Cleat Set w/o Cleat Nut (Multiple Release Mode / Pair)	A		
7	Y-41704030	Cleat Fixing Bolt (1 pc.)	A	A	
8	Y-42423000	Cleat Adapter (1 pc.)	A	A	
9	Y-40N01000	Cleat Nut (1 pc.)	A	A	
10	Y-46D98050	SM-PD62 Reflector Unit (Pair)			
10	Y-46D98060	SM-PD62 Reflector Unit (AS/Pair)			

A: Same parts.

B: Parts are usable, but differ in materials, appearance, finish, size, etc.
Absence of mark indicates non-interchangeability.

Jan.-2010-2991A
© Shimano Inc. A

Specifications are subject to change without notice.

SHIMANO